

Sediment Basin Essential Magnolia Trace

At Magnolia Trace, two of the industry leaders in sediment basin technology will discuss the proper use of a sediment basin as well as the methods to retrofit a stormwater basin as a sediment basin during the construction phase. Michael Brewer of Faircloth Skimmers, and Jamie McCutcheon of RYMAR Waterworks (Marlee Skimmer) will lead the discussion.



Alabama Agricultural Museum Tour Landmark Park

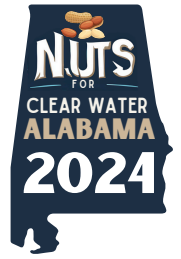


(Optional tour for those who registered. Participants can walk to the Museum from the Stokes Activity Barn)

The Alabama Agricultural Museum has been located at Landmark Park since 1992, and now has all-new exhibits. The 6,000 square foot building showcases the agricultural history of the Wiregrass region in the 1890s.

CLEAR WATER ALABAMA™ 2024 FIELD DAY

LANDMARK PARK | DOTHAN | SEPTEMBER 26, 2024



- 7:00 – 7:55 AM **Qualified Credentialed Inspector Training** (HBAA only)
Landmark Park, Stokes Activity Barn
- 7:30 – 7:55 AM **Registration, Exhibits Open, Continental Breakfast**
- 7:55 AM **Welcome and Logistics**
Perry Oakes, Erosion & Sediment Control Program Coordinator
Alabama Soil and Water Conservation Committee
- 8:00 – 12:00 PM **Load Buses to Tour Field Day Sites**
Visit sites: review erosion control, sediment control, and stormwater management practices.
- 12:00 - 12:45 PM **Lunch**
Landmark Park, Stokes Activity Barn
- 12:45 PM **Pick up Certificate of Training (2.5 PDUs)**
Landmark Park, Stokes Activity Barn
- 1:00 - 2:00 PM **Visit Alabama Agricultural Museum** (optional)

INDUSTRY SPONSORS



WIREGRASS

Alabama Power Company
Auburn University Stormwater
Faircloth Skimmer
FODS
Geneva County SWCD
Hanes Geo Components, Inc.
Henry County SWCD
RYMAR Waterworks
Wiregrass RC&D



SWITCHGRASS

American Excelsior Co.
Applied Polymer Systems
Flexamat (Motz Enterprises, Inc.)
Ferguson Waterworks
Profile Products
Silt Saver
Sunshine Supplies
TTL



LITTLE BLUESTEM

AACD
AL811
AGC
Coffee County SWCD
Erosion Pros
Western Green

LOCAL SPONSORS

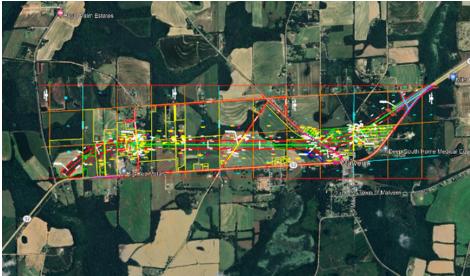
Coffee, Covington, Geneva, Henry and Houston County Soil and Water Conservation Districts
City of Dothan
Wiregrass RC&D
Houston County Commission
The Choctawhatchee, Pea and Yellow Rivers WMA
Visit Dothan
Dothan Area Chamber of Commerce
Houston County Extension
Southern Habitats

Help Solve an Erosion & Stormwater Problem Landmark Park



Landmark Park is a unique, 150-acre outdoor classroom where you can experience the rich natural and cultural heritage of the Wiregrass Region. Even though the park has been around since the 1970's there are still some erosion and stormwater issues that need to be addressed. Those on the Field Day will participate in a led discussion about possible solutions for a problem that has been an issue at the park for years.

ALDOT AL 52 Expansion & Relocation Project Geneva County



Alabama Department of Transportation's Rebuild Alabama project to widen SR-52 in Geneva County will improve traffic flow and reduce congestion along SR- 52 from near Cox Street in Slocomb to Scott Road in Malvern. The project will add a travel lane in each direction and relocate the route. This is Phase One on SR-52 that will ultimately complete a four-lane connection from Hartford to Dothan. The approximately \$23 million project was awarded to Wiregrass Construction Company, Inc., out of Dothan, Ala., who had the lowest bid that met the project requirements. Proceeds from the state gas tax increase will fully fund the project. The project is expected to last approximately three years.

Erosion Control, Sediment Control, and Stormwater Management Best Management Practices (BMPs) that will be utilized include the following: Topsoil, Seeding, Solid Sodding, Mulching, Erosion Control Blankets, Temporary Seeding/Mulching, Slope Drains, Sand Bag protection techniques, Type A silt fence, Drainage Sump Excavation, Riprap installation, Riprap Check Dams, various inlet protection BMPs, Wattle installations, and Ditch Check flocculant applications.

The BMPs and environmental challenges will be presented by representatives from ALDOT (Owner), Wiregrass Construction (Prime Contractor), and Erosion Pros (Prime Contractor AL QCP).

(ALDOT project # RAED-031-052-003, RAED-031-052-005)

Homesite Magnolia Trace



The Magnolia Trace Subdivision on County Road near Dothan is being developed by Stone Martin Builders. As in previous Clear Water Alabama Field Day events, a homesite was selected to showcase erosion control, sediment control, and stormwater management techniques that could be used. A group of industry professionals will discuss the attributes of various practices.

Polyacrylamide Demonstration Magnolia Trace



While the attendees are at the Magnolia Trace Subdivision, they will also hear from the experts about the proper use of Polyacrylamides. Dr. Mike Perez of the Auburn University Stormwater Research Facility, and Seva Bray of Applied Polymer Systems Inc. will demonstrate the proper selection and use of polyacrylamides to reduce turbidity in construction stormwater runoff.