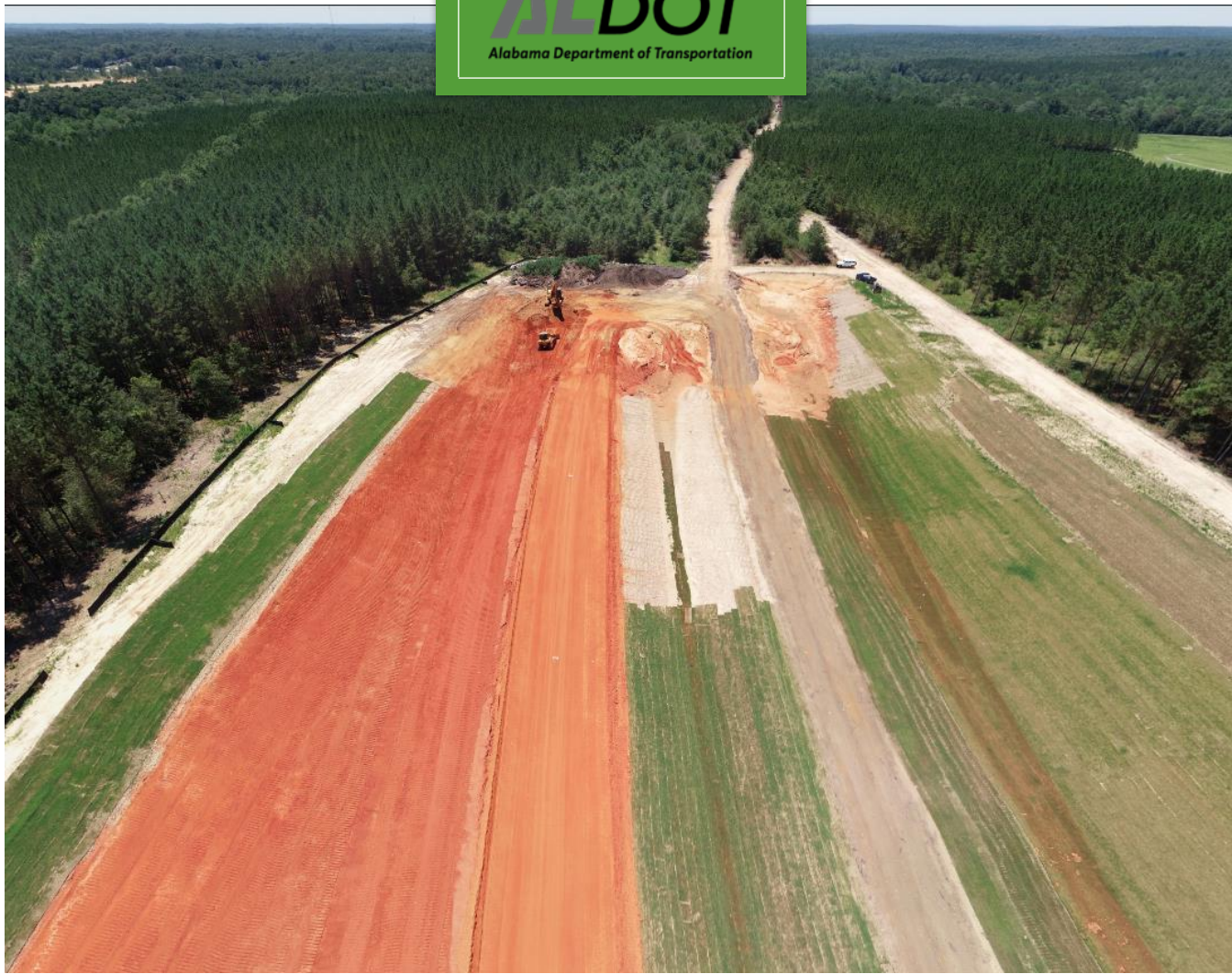


ALDOT
Alabama Department of Transportation



THE US98 STORY

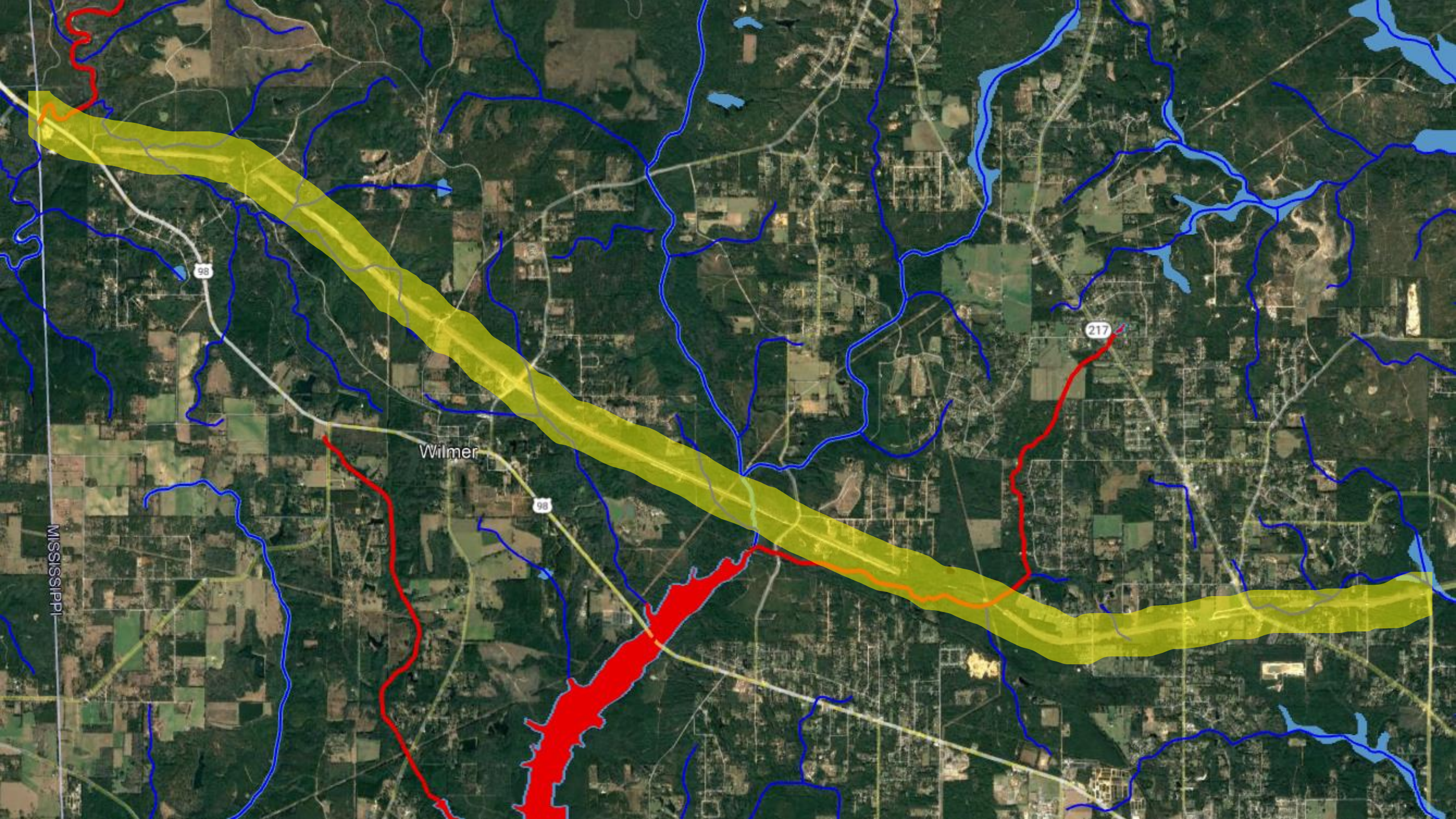


ALDOT | FAGAN
Alabama Department of Transportation

Project Corridor



You are here



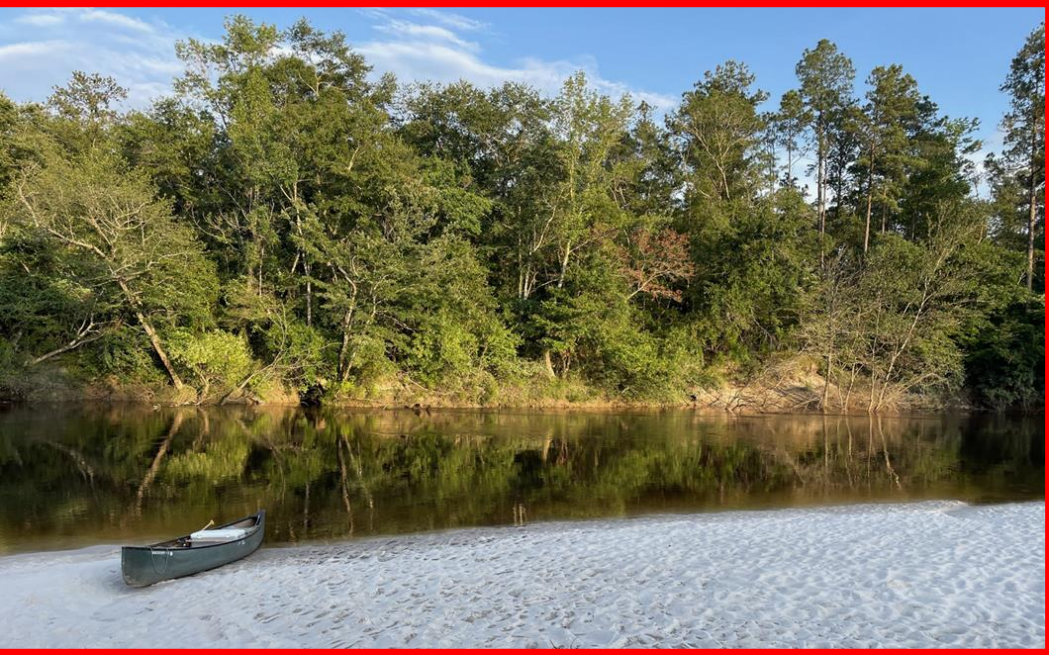
Wilmer

98

98

217

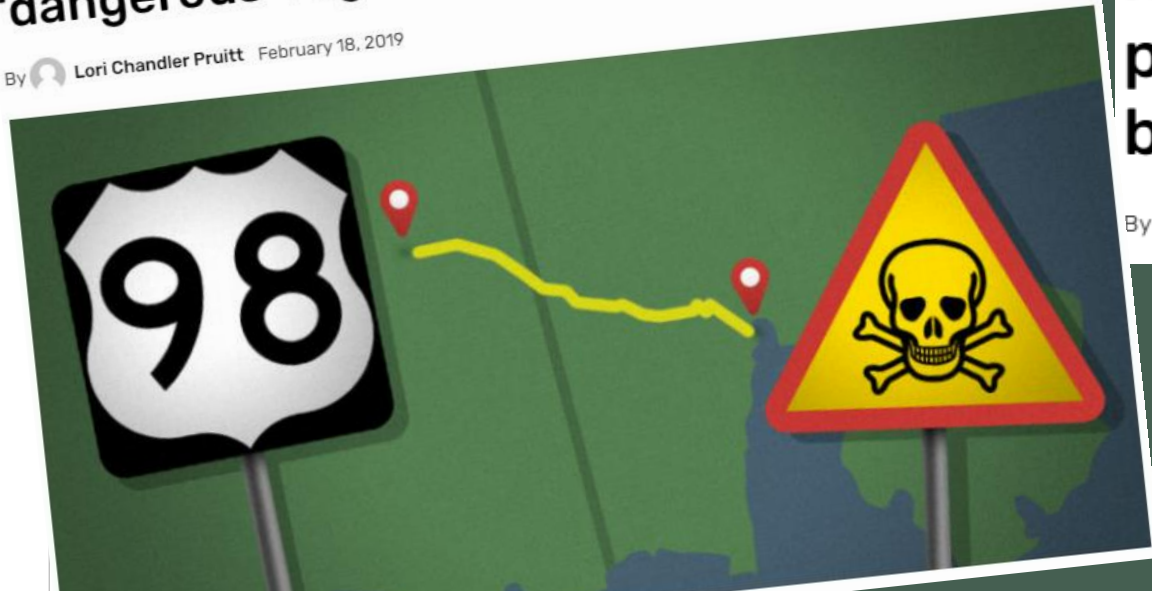
MISSISSIPPI



NEWS

Concerns continue in south Alabama for 'dangerous' Highway 98

By [Lori Chandler Pruitt](#) February 18, 2019



NEWS

State Sen. Williams to Gov. Ivey on 'Bloody 98' highway improvement delays: 'I have been patient – The people of Mobile County have been patient but enough is enough'

By [Jeff Poor](#) April 28, 2021



MOBILE COUNTY

3-year-old among four dead in head-on crash on 'Bloody 98'

by: [Evan Wilkins](#)
Posted: Oct 9, 2021 / 07:15 AM CDT
Updated: Oct 15, 2021 / 05:38 AM CDT



FATAL CRASH VICTIMS IDENTIFIED
MOBILE COUNTY, ALABAMA

Muddy 98



Big Creek Lake photographs

Published: Sep. 20, 2007, 5:14 p.m.

(Bill Finch/Press-Register)

Below new U.S. 98 construction, a tributary to Collins Creek _ a major tributary of the city's drinking water supply _ sits exposed to silt and clay runoff. There's a catch basement below this point, but it has received so much silt that it is over capacity, and silt continues to pour downstream through the wetlands surrounding the city's water supply at Big Creek Lake.

A foot or more of fresh red clay and silt clogs a tributary to Big Creek, one of the primary sources for Mobile's drinking water. The photo was taken immediately below construction on the U.S. 98 corridor. The riprap in the background surrounds a sediment basin that has apparently been overtopped multiple times, releasing loads of sediment into the wetlands around Big Creek Lake.

Below highway work for U.S. 98, a tributary to Collins Creek _ one of the major creeks feeding the city's drinking water supply _ is almost completely filled with fresh silt and mud. Recent siltation was so severe throughout this wetland that water could no longer move through many channels. On the upstream side of the road project, water still flowed clear as thin tea over white sandy stream bottoms devoid of such silt deposits.

This photo shows another tributary to Collins Creek turned chocolate-milk brown by silt and sediment. The sediment apparently came from the U.S. 98 road project immediately upstream. Officials with the Mobile Area Water and Sewer Service are in the background.

MUD INFILTRATES BIG CREEK WATER

SEDIMENT APPARENTLY TIED TO ROAD PROJECT



A muddy stream visible in Big Creek Lake appears to originate from the mouth of Long Creek, a small creek that enters the lake near the U.S. 98 bridge. The photo depicts as it flows toward the water treatment plant intakes, which are not visible in the image. Long Creek, along with other creeks and numerous dambocks of the Alabama Department of Transportation's U.S. 98 project, has suffered a heavy influx of sediment since the road work began.



Mobile is given ALDOT apology

Published: Nov. 08, 2007, 8:46 p.m.

By [Ben Raines](#) | braines@al.com

More mud

Published: Nov. 08, 2007, 8:32 p.m.



ALDOT lawsuit filed

Published: Dec. 11, 2007, 5:47 p.m.

By [Ben Raines | braines@al.com](#)

ALDOT fights state lawsuit over U.S. 98

Published: Feb. 22, 2008, 9:44 a.m.

By [Ben Raines | braines@al.com](#)

Mobile Baykeeper settles 'Muddy 98' lawsuit with Alabama transportation department

Updated: Oct. 17, 2009, 11:25 a.m. | Published: Oct. 17, 2009, 10:25 a.m.



By [Ben Raines | braines@al.com](#)

Advertisement



'Muddy 98' settlement sets no limits on development in drinking water watershed

Updated: Oct. 20, 2009, 12:30 p.m. | Published: Oct. 20, 2009, 11:30 a.m.

By [Ben Raines | braines@al.com](#)

[View full size](#)

Ad removed. [Details](#)



“it’s cheaper to pay the fine...”

Ala. DOT Fined for Polluting Mobile's Drinking Water

Mobile County's health officer says fine too small

Source Associated Press and the Press-Register

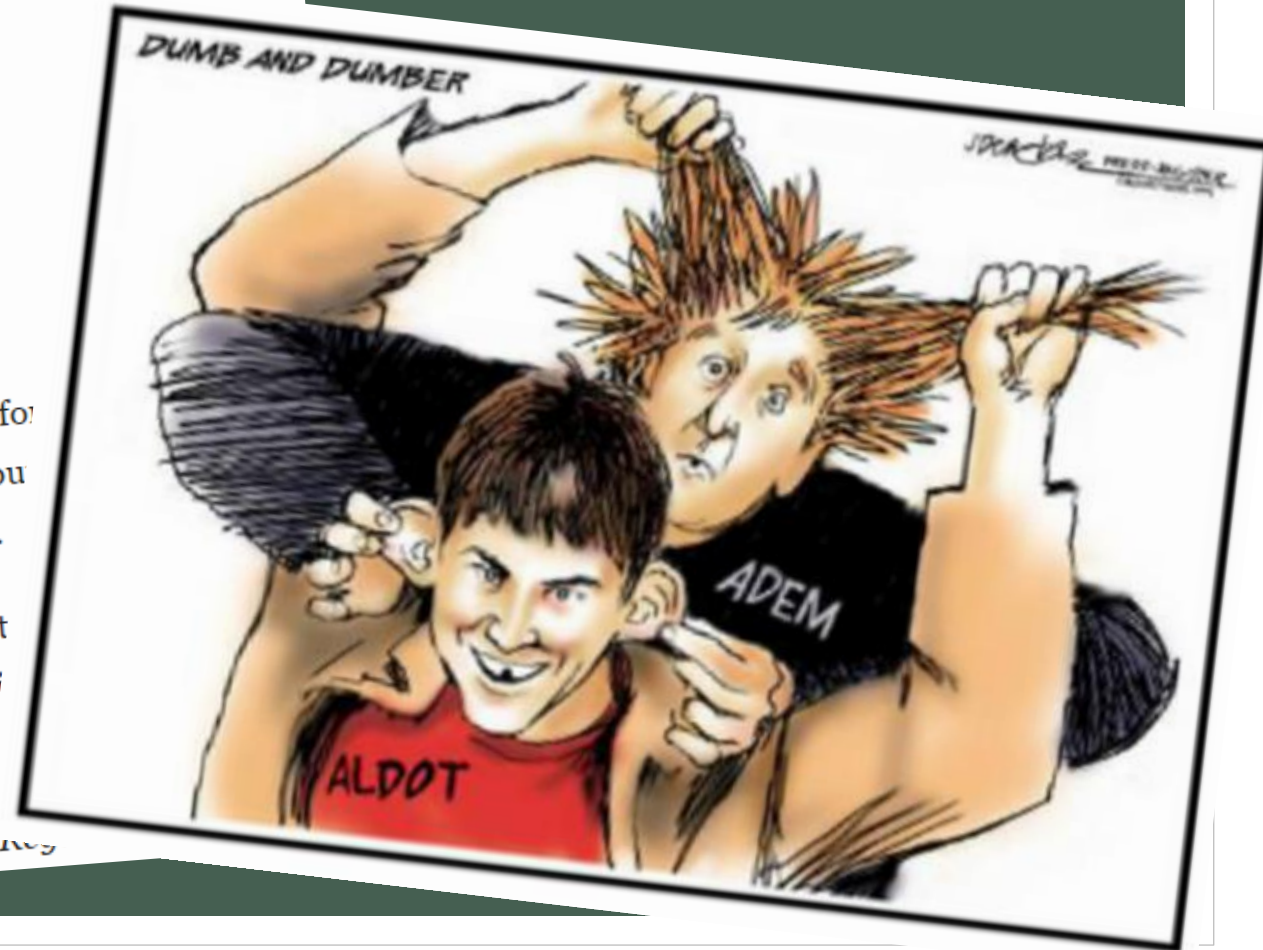
Jan. 4, 2008



The Alabama Department of Transportation (ALDOT) may face a **\$75,000 fine** for mud run off a U.S. 98 construction site and flow into Mobile's drinking water, but County's health officer says the fine is too small, the *Associated Press* reported.

The fine proposed by the Alabama Department of Environmental Management constitutes **less than two-tenths of 1% of the \$42 million cost** of building the hi

ADEM could have proposed a steeper fine, up to \$250,000, but compromised matter amicably," according to state documents reported Jan. 3 by the *Press-Reg*





UNITED STATES
ENVIRONMENTAL PROTECTION AGENCY
CRIMINAL INVESTIGATION DIVISION

SPECIAL AGENT
MATTHEW ANDERSON

100 W. CAPITOL ST., SUITE 722
JACKSON, MS 39269-1602

OFC: (601) 965-4168
FAX: (601) 965-4174
anderson.matt@epa.gov



U.S. DEPARTMENT OF TRANSPORTATION
OFFICE OF INSPECTOR GENERAL

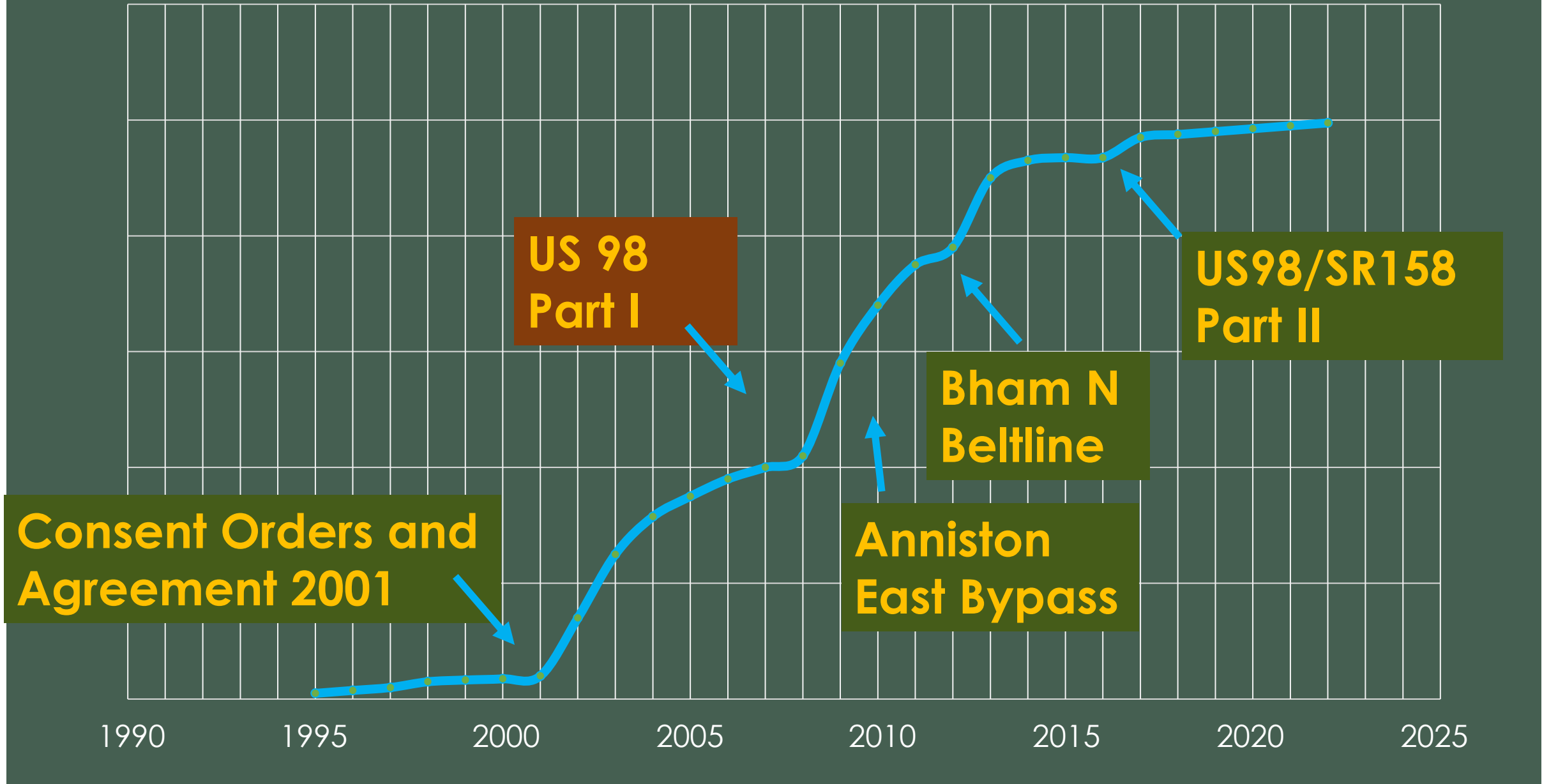
TAMMIE L. McCRAVY
SPECIAL AGENT

61 FORSYTH STREET, SW
SUITE 17T60
ATLANTA, GA 30303-3104

TEL: (404) 562-3862
CEL: (404) 567-2480
FAX: (404) 562-3855
Tammie.McCravy@oig.dot.gov



ALDOT CONSTRUCTION STORMWATER PROGRAM



DISRUPTION (2002 - 2008)



Stormwater Tracking System

Materials and Tests Involvement (Buddy)

Construction Bureau Involvement (Barry)

QCI Training

Division Stormwater Coordinators

Standard Drawings Updated

Specifications Strengthened

Five Pillars Developed

DISRUPTION (2008 - 2012)



Specifications Further Strengthened

3:1 or Flatter Slopes Required

Permitting/Mitigating all Potential Impacts w/in ROW

Began Enforcing 17 ac Disturbance Limitation

Increased Contractor Accountability

Increased Inspector Knowledge

Enhanced Research

Increased Leadership in Management

Alabama's bypass to the beach, a 'top priority' project, revived with BP money

Published: Oct. 05, 2016, 2:14 p.m.

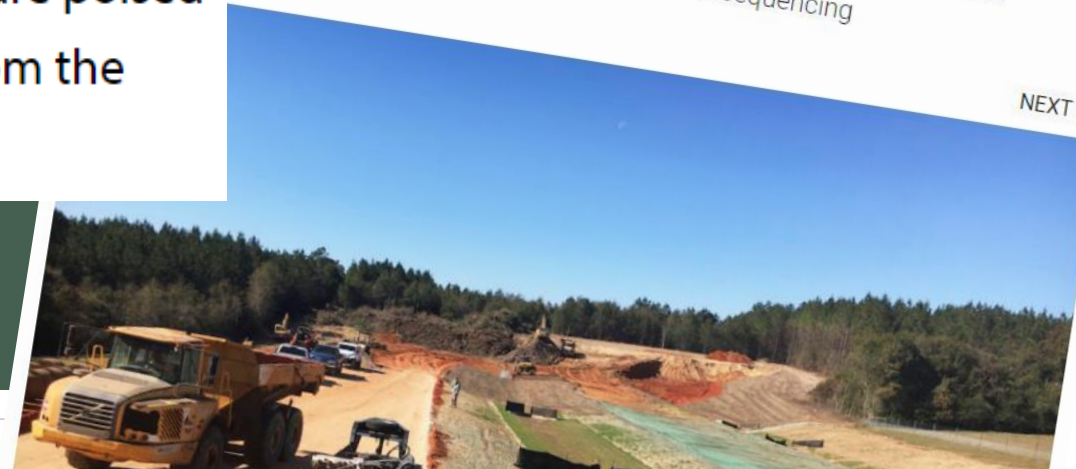
Crews Continue Important Highway Corridor Project After 10-Year Lull

THU AUGUST 18, 2022 - SOUTHEAST EDITION #17

CINDY RILEY - CEG CORRESPONDENT

Despite an awkward start and a 10-year lull in construction, workers are poised to complete the U.S. 98/SR158 highway corridor in Mobile County from the Alabama/Mississippi state line to Interstate 65 in the city of Mobile.

Special Measures Protect Water Sources in Alabama's \$110M US 98/SR 158 Extension Projects
Stormwater Best Practices: Smaller Chunks of Work and Continuous Pursuit of Stabilization Change US 98/SR 158 Extension Project Sequencing





- Lott Road to Schillinger Rd – complete
- Lott Road Overpass – near complete
- Glenwood Rd To Lott Rd – near complete
- Glenwood Road over 98 – **underway**
- Big Creek Bridge Extension – complete
- Wilmer Georgetown over 98 – complete
- Mississippi to Glenwood Rd – **underway**

Managing Communication.



Solid Contract Language
QCI Training
Plan Reviews
CBMPP/Contractor SWMP

Prebid/Preconstruction Meetings
Onsite SW Meetings
Scheduling Meetings
Tailgate Meetings

Managing Communication.



Rip rap is contingent only if sod is unavailable and only for the north side where the ditch currently is complete, but not stabilized.

Inspection/Reporting Systems
UAV/Drone Use



Managing Work.







Managing Work.





Managing Work.





Managing Work.

Early Installation of Cross-Drains





ALDOT
Alabama Department of Transportation

“ALDOT has institutionalized stewardship.

It’s the way they do business.”

- Dr. Eve Brantley, Dec 2019

Rusty Goff(1976 - 2022)

Clean water in,
clean water out.

Managing Water.



Water Bars



Soils



Soils



Managing Erosion.

1. solid sodding/crushed aggregate
2. permanent seeding and mulching
3. temporary mulching only
4. temporary seeding and mulching
5. polyethylene



Managing Erosion.

1. solid sodding/crushed aggregate
2. permanent seeding and mulching
3. temporary mulching only
4. temporary seeding and mulching
5. polyethylene





Managing Erosion.





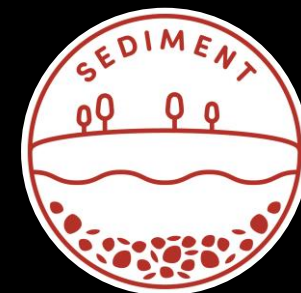


Managing Sediment.



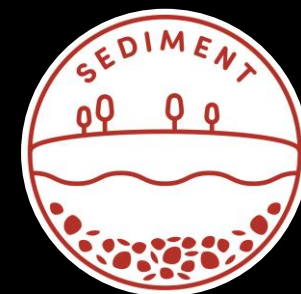


Managing Sediment.





Managing Sediment.





Managing Sediment.









ALDOT
Alabama Department of Transportation



Joe Fresolone, project ~~turkey~~ manager

“ALDOT has institutionalized stewardship.

It’s the way they do business.”

- Dr. Eve Brantley, Dec 2019

ALDOT
Alabama Department of Transportation



Eric Gautreau, stormwater inspector

“ALDOT has institutionalized stewardship.

It’s the way they do business.”

- Dr. Eve Brantley, Dec 2019

ALDOT
Alabama Department of Transportation



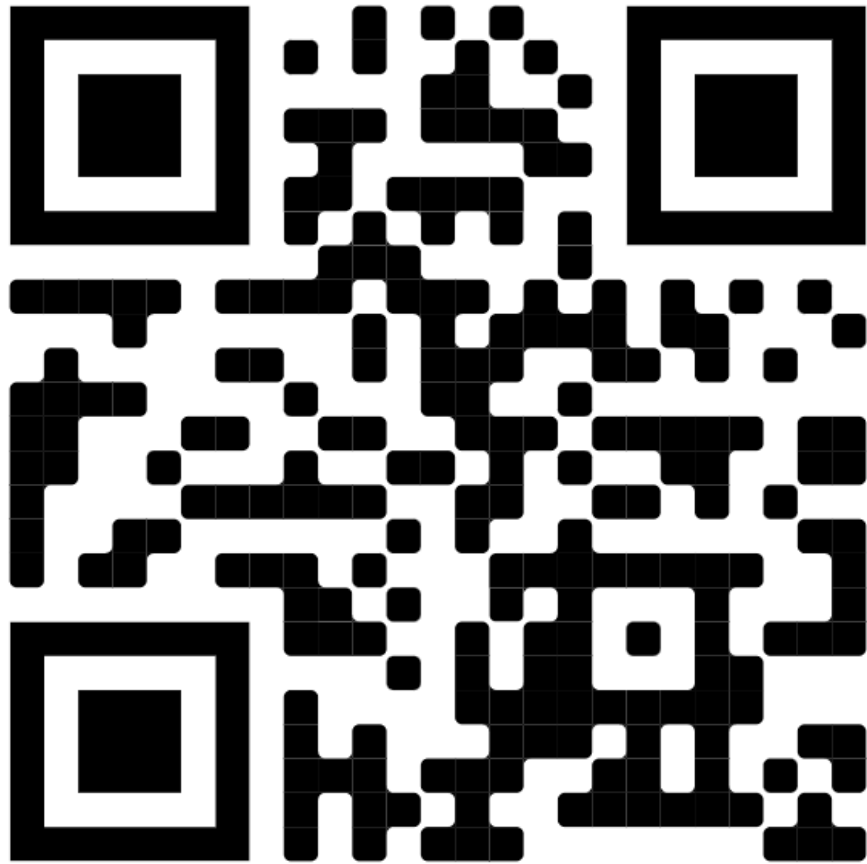
Buddy Cox (1947 – 2015)

“ALDOT has institutionalized stewardship.

It’s the way they do business.”

- Dr. Eve Brantley, Dec 2019

Certified Professional in Erosion and Sediment Control (CPESC) in-person review course



contact Barry
for details

barry@faganllc.com

334-850-5721



Certified Professional in
Erosion and Sediment Control

CPESC

In-Person

General Principles Review

December 6, 2022

ALDOT Central Office
1409 Coliseum Blvd
Montgomery, AL

Instructors

**Earl Norton, CPESC -Fellow,
CPAg, CCA**
Earl_norton@yahoo.com

**Barry Fagan, PE/PLS, ENV SP,
CPESC, CPMSM, CESSWI**
barry@faganllc.com

About the Course

The CPESC General Principles Review course offers an overview of the CPESC Exam format and serves as a review for many of the concepts that CPESC Exam applicants and construction stormwater professionals should be familiar with.

Registration Ends November 29th

*register through [ENVIROCERT INTERNATIONAL](https://envirocert.org/events/category/exams-reviews/) at
<https://envirocert.org/events/category/exams-reviews/>

*course attendees DO NOT have to be approved or scheduled to take the CPESC Exam

*certificate for professional development hours will be offered



SOIL AND WATER
CONSERVATION
SOCIETY

Alabama Chapter

FAGAN