

# 2022 UPDATES TO ALABAMA'S BLUE BOOK

For Presentation at Clear Water Alabama 2022  
Daphne Civic Center

**Perry L Oakes, PE**

Erosion and Sediment Control Program Coordinator  
AL Soil and Water Conservation Committee



**ONLY LOOKING AT MAJOR CHANGES**

# CLARIFY PERMANENT AND TEMPORARY SEEDING MIXES

Table PS-1 Commonly Used Plants for Permanent Cover with Seeding Rates and Dates<sup>1</sup>

Species	Seeding Rates/Ac PLS <sup>2</sup>	North	Central	South
		Seeding Dates		
Bahiagrass, Pensacola	40 lbs	--	Mar 1-July 1	Feb 1-Nov 1
Bermudagrass, Common	10 lbs	Apr 1-July 1	Mar 15-July 15	Mar 1-July 15
Bahiagrass, Pensacola Bermudagrass, Common	30 lbs 5 lbs	--	Mar 1-July 1	Mar 1-July 15
Bermudagrass, Hybrid (Lawn Types)	Solid Sod	Anytime	Anytime	Anytime
Bermudagrass, Hybrid (Lawn Types)	Sprigs 1/sq ft	Mar 1-Aug 1	Mar 1-Aug 1	Feb 15-Sep 1
Fescue, Tall	40-50 lbs	Sep 1-Nov 1	Sep 1-Nov 1	--
Sericea	40-60 lbs	Mar 15-July 15	Mar 1-July 15	Feb 15-July 15
Sericea & Common Bermudagrass	40lbs 10 lbs	Mar 15-July 15	Mar 1-July 15	Feb 15-July 15
Switchgrass, Alamo	4 lbs	Apr 1-Jun 15	Mar 15-Jun 15	Mar 15-Jun15

**DO NOT USE** Seeding Rates as part of a mixture unless shown as a mixture in this table.

1 DO NOT USE Seeding Rates as part of a mixture unless shown as a mixture in this table.

2 PLS means Pure Live Seed and is used to adjust seeding rates. For example, to plant 10 lbs PLS of a species with germination of 80% and purity of 90%, PLS= 0.8 X 0.9 = 72%. 10lbs PLS = 10/0.72 = 13.9 lbs of the species to be planted.

# WILDLIFE FRIENDLY NETTING

FOR NETTING OVER MULCH OR  
NETTING ASSOCIATED WITH  
EROSION CONTROL BLANKETS,  
CONSIDER THE USE OF WILDLIFE  
FRIENDLY NETTING.



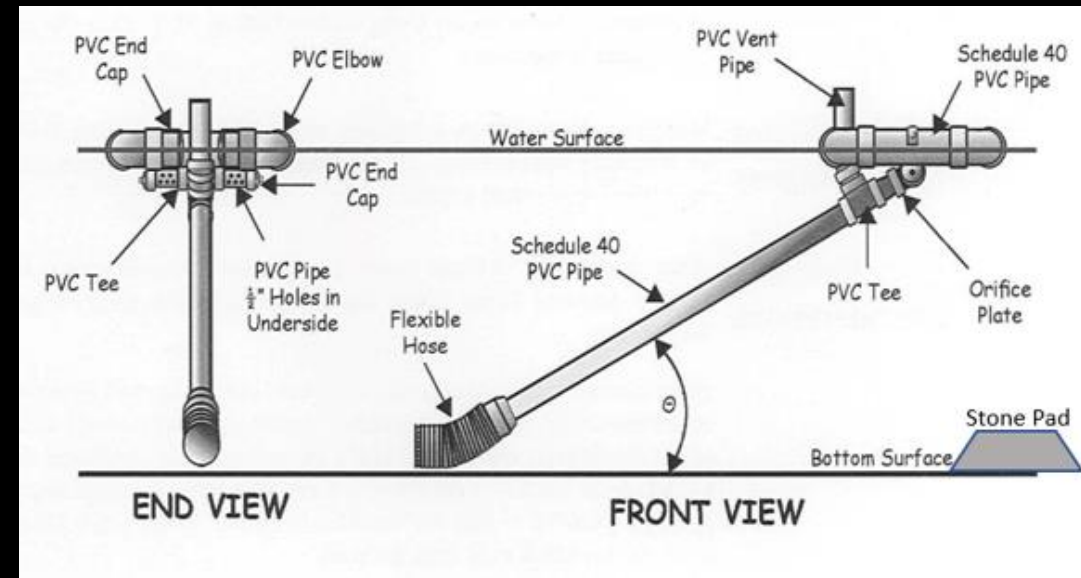
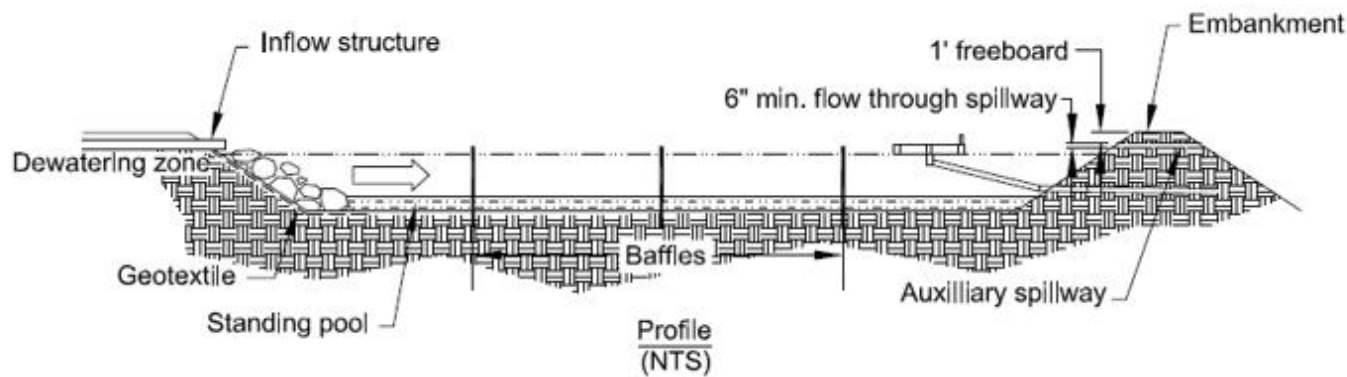


# SEDIMENT BASIN - STANDING POOL

MINIMUM 1-FOOT OFF THE BOTTOM OF THE SEDIMENT BASIN

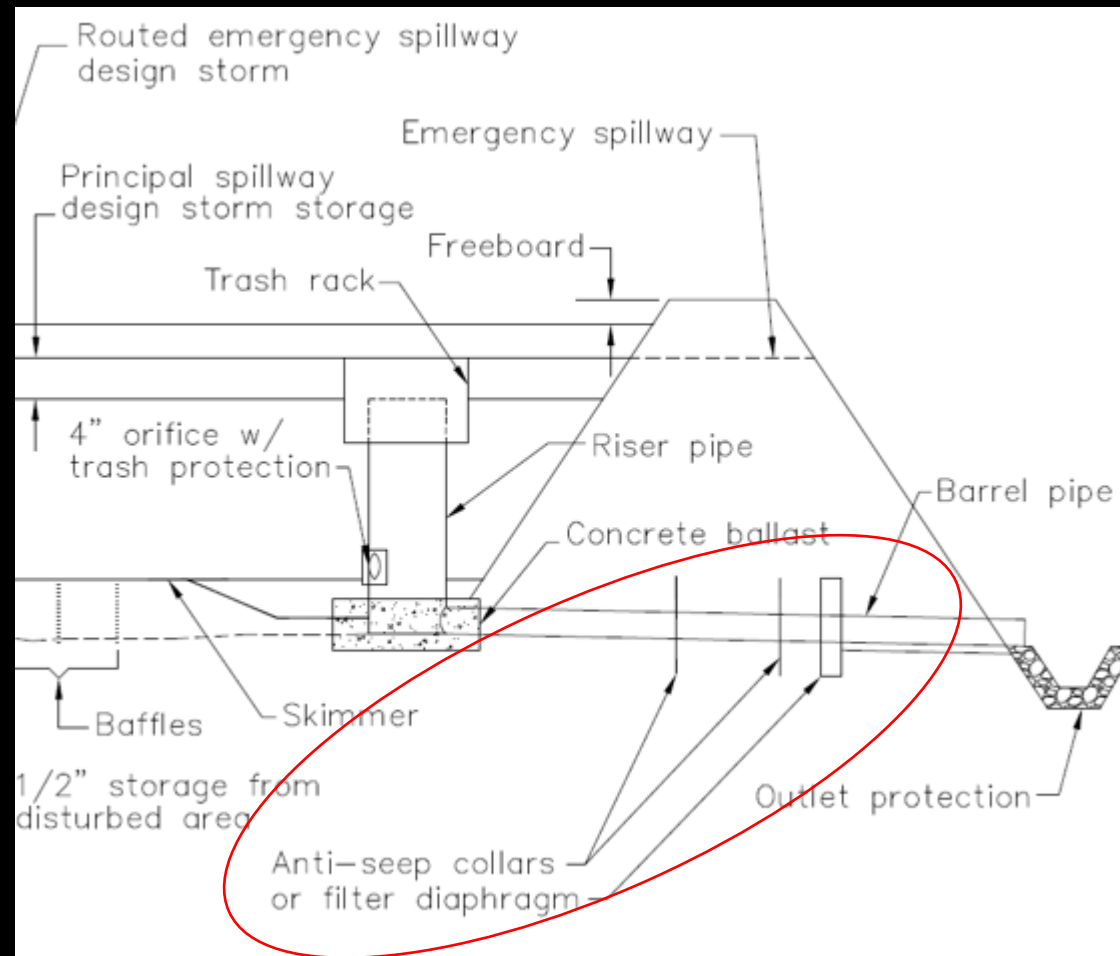
PREVENTS RESUSPENSION

NOT A VECTOR ISSUE

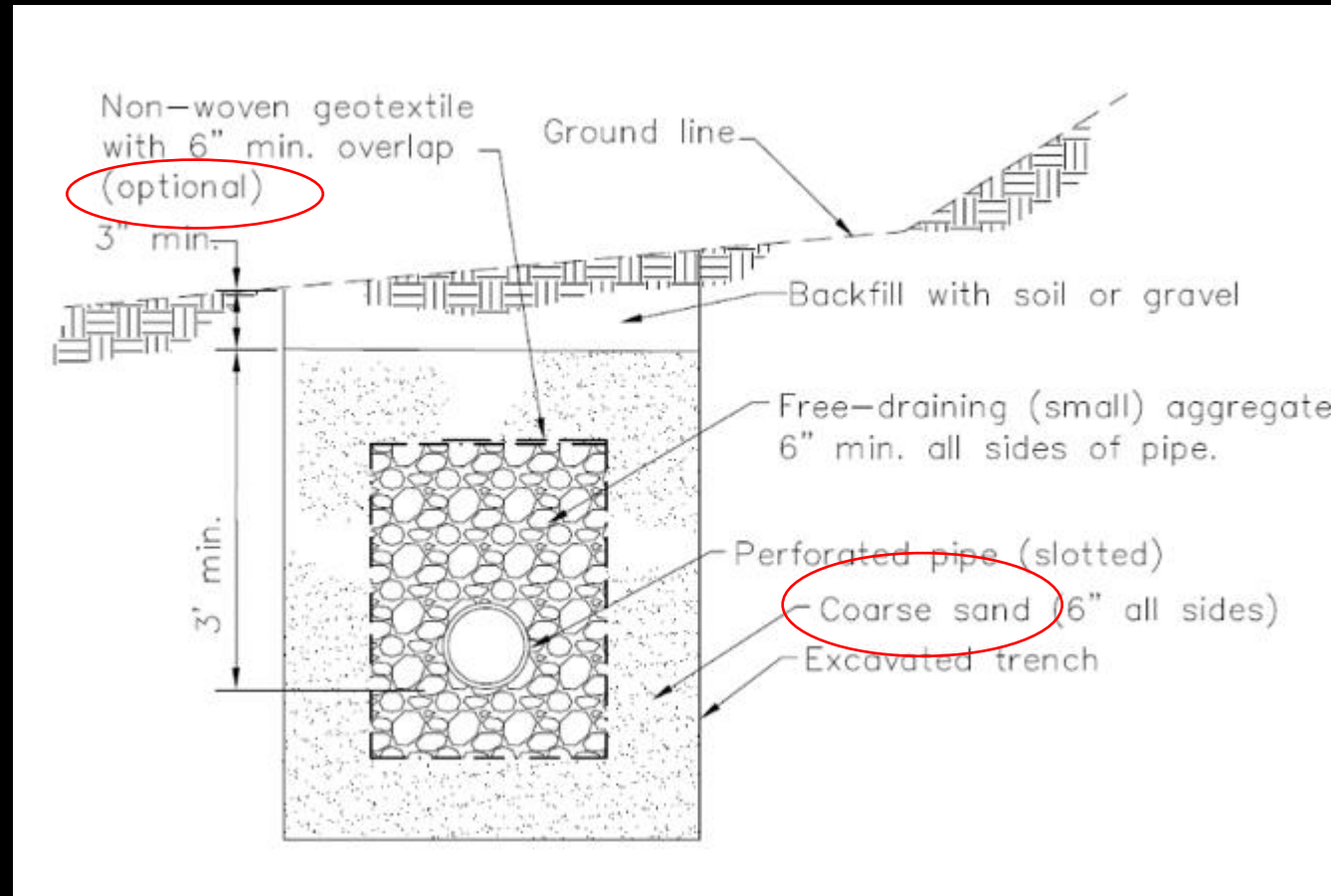


# DIAPHRAGM DRAIN (SAND)

**BEST ALTERNATIVE IN LIEU OF ANTI-SEEP COLLAR**



# TILE DRAIN WITH SAND



# TURBIDITY REDUCTION BARRIER (FORMERLY SEDIMENT RETENTION BARRIER)

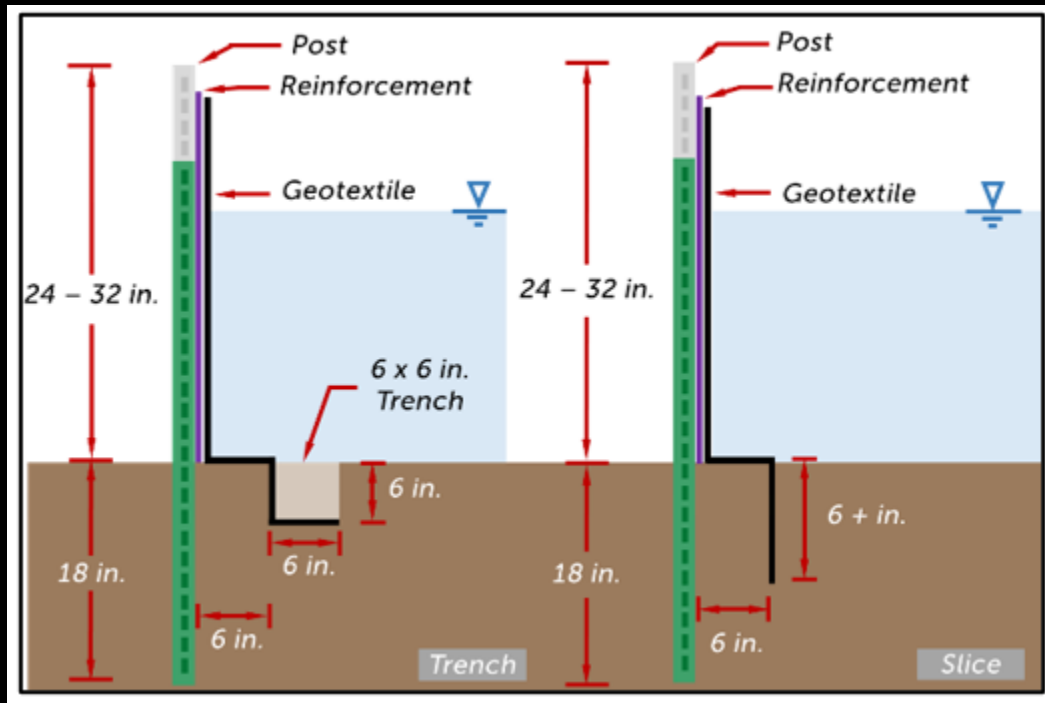
Moved to Flocculant Practice





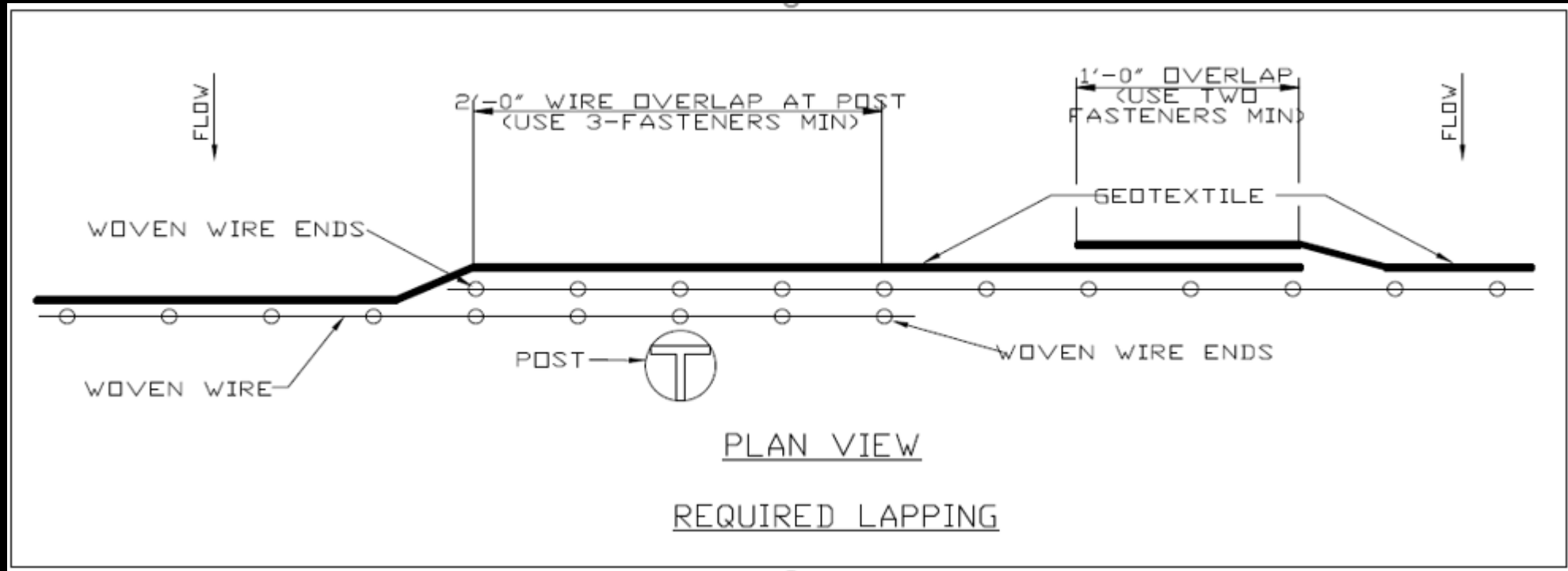
# SEDIMENT BARRIER (SILT FENCE)

**RUNOFF VOLUME < DESIGN STORAGE VOLUME**  
**OFF-SET INSTALLATION**  
**OVERTOPPING AND DEWATERING**



# SEDIMENT BARRIER (SILT FENCE TYPE A)

## ADDED OVERLAP DETAILS



# GROUNDSKEEPING

**FUELING AND SERVICING AND WASTE CONTAINERS SHOULD BE “AS FAR AWAY AS POSSIBLE” FROM WATERS OF THE STATE AND CONVEYANCES TO.**

# DELETED SEDIMENT TRAP





# APPENDIX CHANGES

## ADDED WEB SOIL SURVEY INSTRUCTIONS INSTEAD OF NUMEROUS SOILS DATA PAGES.


Appendix

**Instructions for Use of Web Soil Survey (WSS) for Generating Engineering, Physical & Chemical Properties of Soils**

To access the Web Soil Survey Home page, click the following link:

<https://websoilsurvey.sc.egov.usda.gov/App/HomePage.htm>

The Web Soil Survey page should be displayed.



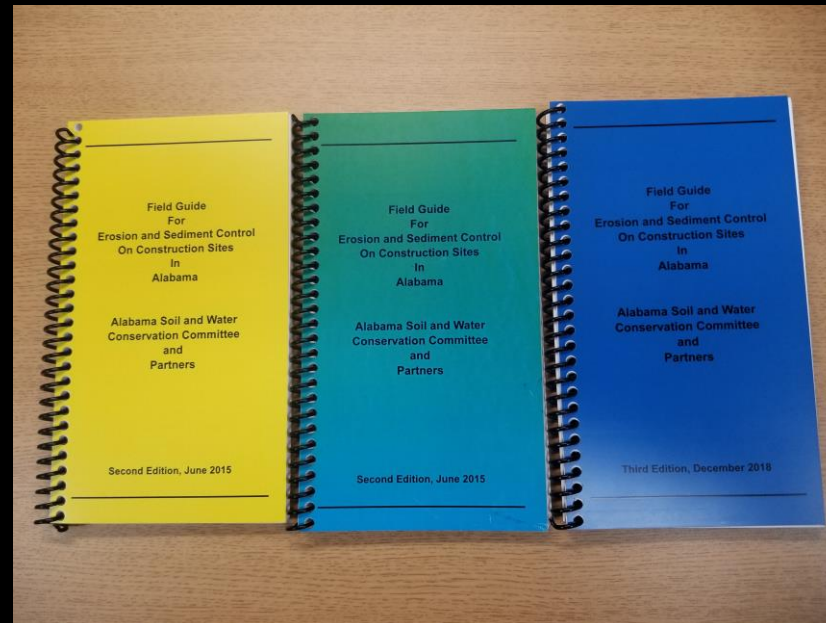
The screenshot shows the Web Soil Survey homepage. At the top, there is a banner with the USDA logo and the text 'Natural Resources Conservation Service' and 'Web Soil Survey'. Below the banner is a navigation menu with 'Home', 'About Soils', 'Help', and 'Contact Us'. The main content area features a search box, a 'Browse by Subject' menu, and a 'Welcome to Web Soil Survey (WSS)' section. A red arrow points to a green circular button labeled 'START WSS'.

Click the Start Web Soil Survey (WSS) button.

# MORE REVISIONS TO COME (HOPEFULLY, THIS YEAR)

## FIELD GUIDE VERSION 4

## FIELD GUIDE APPS FOR IPHONE AND ANDROID





**WHAT NEW??**



# HAVE YOU SEEN THE EROSION AND SEDIMENT CONTROL TIPS?

- Goes out in an email blast about every 2 weeks.
- Already picked up by many SWCDs and put on their FB pages.
- Also, a BLOG on SWCC Page
- ASWRF puts on LinkedIn
- If you want to be included in the email blast, send Perry an email asking to be included.

## Erosion and Sediment Control Tip #10



Oakes, Perry - Auburn, AL

To

Bcc

Retention Policy: [Learn More](#) | [Permanently Delete](#) (7 years)

You forwarded this message on 7/6/2021 8:16 AM.

### Today's Erosion and Sediment Control Tip



Establishing perennial vegetation by seeding is by far the most effective method, but the seed must have a good chance to germinate and grow prior to the ending date, the more potential for the vegetation to not survive. The most difficult period is the cold winter months, while the non-vegetative growth (from the seed), and have plenty of time to grow and photosynthesize during the growing season resumes. If you can, always plant your grass seed

**FYI - Don't forget to register for Clear Water Alabama 2021 in October!**

### **Perry L. Oakes, PE**

*Erosion & Sediment Control Program Coordinator  
Alabama Soil and Water Conservation Committee  
334-887-4547 (desk)  
334-703-6365 (cell)*



**2022**

**Clear Water Alabama  
Award of Excellence**

Presented

September 21, 2022

To

For the Project

A project that exemplified the principles of erosion  
and sediment control on a construction site.

*Our FIRST Clear Water Alabama Award of Excellence  
will be presented at Clear Water Alabama this year!!*



**QUESTIONS??**